

OWNER'S MANUAL

RD-803IE

IMPORTANT: Read these instructions before installing, operating or servicing this product.

MODEL : TR-0100 TURNING ROLL

Serial Number : 200701021 and later

Revised Date : Jan. 31, 2007

UNITED PROARC CORPORATION

No. 3 Gungye 10th Road, Pingjen Ind. Park,
Pingjen City, Taoyuan 324, Taiwan
<http://www.proarc.com.tw>

Tel No: 886 3 4696600
Fax No: 886 3 4694499
E-Mail: customerservice@proarc.com.tw

TABLE OF CONTENTS

Introduction	Introduction.....	i
	Limited Warranty	ii
Specification	1.1 Specification	1
Operator controls	2.1 Control panel	2
Trouble Shooting	3.1 Trouble shooting guide.....	3
Parts List	4.1 Parts list - main frame	5
	4.2 Parts list – control box.....	7
Circuit Diagram	5.1 Main control circuit diagram	9
	5.2 Relay board – circuit diagram.....	10
	5.3 I/O interface... ..	13

INTRODUCTION



WARNING

A procedure, which, if not properly followed, may cause injury to the operator or others in the operating area.

Equipment Identification

The identification number specification or part number, model, and serial number of this unit usually appears on a nameplate attached to the control panel, record these numbers for future reference.

Receipt of Equipment

When you receive the equipment, check it against the shipping documents. Make sure it is complete and inspect the equipment for possible damage during shipping. If there is any damage, notify the carrier immediately to file a claim.

Furnish complete information concerning damage claims or mistake(s) in shipment to United ProArc Corporation: No. 3 Gungye 10th Road, Pingjen Ind. Park, Pingjen City, Taoyuan 324, Taiwan. Include the equipment identification number along with a description of the parts in question.

Move the equipment to the installation site before uncrating the unit. Use care to avoid damaging the equipment when using bars, hammers, etc. to uncrate the unit.

LIMITED WARRANTY

UNITED PROARC CORPORATION warrants all new equipment to be free from defects in material and workmanship for a period of one (1) year, provided that the equipment is installed and operated according to instructions stated in this manual.

UNITED PROARC's obligation under this warranty policy is expressly limited to the replace or repair, at its option, of the defected part only. ProArc's option to repair or replacement of a defected part under this warranty shall be based on FOB Taiwan basis.

UNITED PROARC CORPORATION shall not be liable for any loss or consequential damage or express accruing directly or indirectly from the use of equipment covered by this warranty.

This warranty supersedes all previous ProArc warranties and is exclusive with no other guarantees or warranties expressed or implied.

This warranty excludes the consumable parts that are used in normal operation.

1.1 SPECIFICATION

MODEL	TR-0100
Input Power	1 Phase, AC 110/220V, 50/60 Hz
Turning Capacity	1,000 Kg
Load Capacity	1,000 Kg (Drive + Idler)
Speed Range	80~1600 mm/min
Diameter Range	φ 20~800 mm
Drive Motor	DC Motor, 24V 65W
Roller Type	PU, 50mm (W) x 200mmφ
Dimension	520 (L) x 470 (W) x 390 (H) mm
Net Weight	Drive 37 Kg, Idler 17 Kg
Shipping Weight	56 Kg

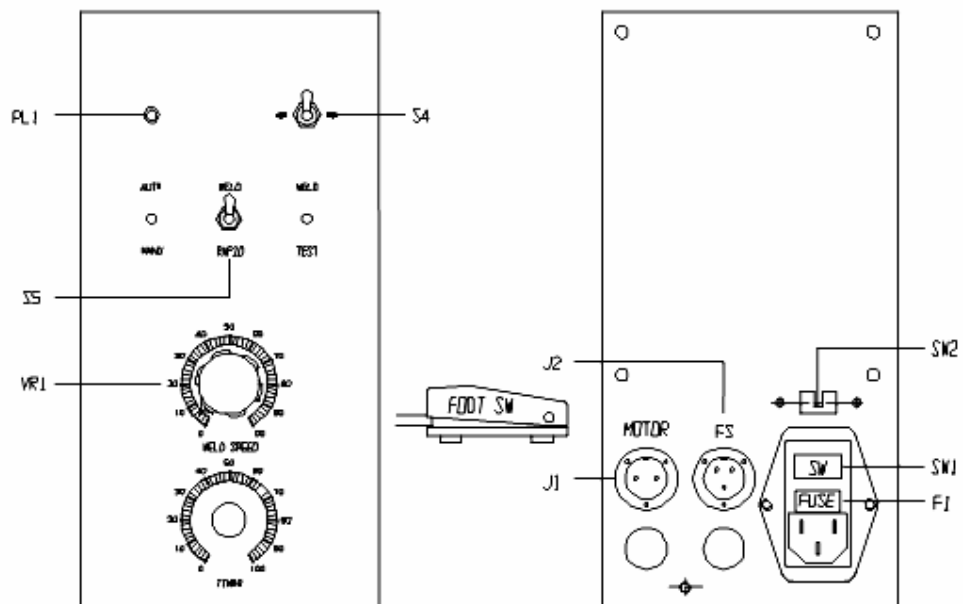
2.1 CONTROL PANEL

Front Panel

PL1 : Power indicator light
 VR1 : Speed adjustment
 S4 : Forward/Reverse switch
 S5 : Weld/Rapid Speed switch

J1 : Motor Connector J1-1, J1-2 (2 Pin)
 J2 : Remote foot switch Connector J2-1,
 J2-2 (3 Pin)
 F1 : Fuse
 SW1 : Power ON/OFF switch
 SW2 : Voltage switch 115V/230V

Rear panel



3.1 TROUBLE SHOOTING GUIDE

NO.	SYMPTOM	POSSIBLE CAUSE	REMEDY
1	Power Indicator does Not.	1. Power Switch Fuse is Damage. 2. LED Burnt. 3. Transformer no Output AC24/18V. 4. Bad Terminal. 5. No power input.	1. Replace a New Fuse. 2. Replace LED. 3. Replace Transformer. 4. Change Terminal. 5. Check the switch.
2	Speed Adjustment Button no Motion.	1.1 Damaged Potentiometer. 1.2 Motor Control PCB no Output.	1.1 Check If Potentiometer is 10K Ω , Otherwise Replace. 1.2 Replace a New Motor Control PCB.
3	Foot Pedal no Motion.	Limit Switch is Broken.	Check / Replace Limit Switch.
4	For / Rev no Output.	Forward no Motion LED 9, LED 10 does Not LIT. Reverse no Motion, LED 11, LED 12 does not LIT.	Check Toggle Switch Contactor. If It Is Damage, Change a New Operation Panel, Otherwise Change a Relay Board.
5	Motor not Motion.	1. Motor Has Power Input But no Motion. 2. Motor Has no Power Input. 2.1 Relay Board no Output. 2.2 I/O Board no Output. 3. Timer is damaged.	1. Replace a new motor. 2.1 Replace Relay Board. 2.2 Replace I/O Board. 3. Change timer.

THIS PAGE IS BLANK

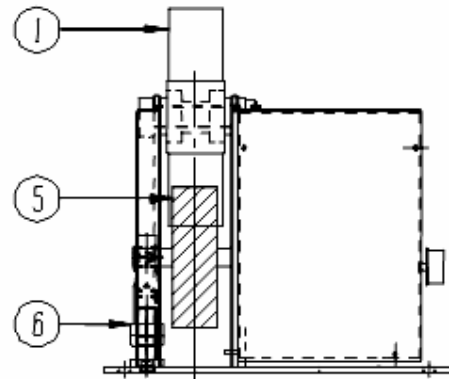
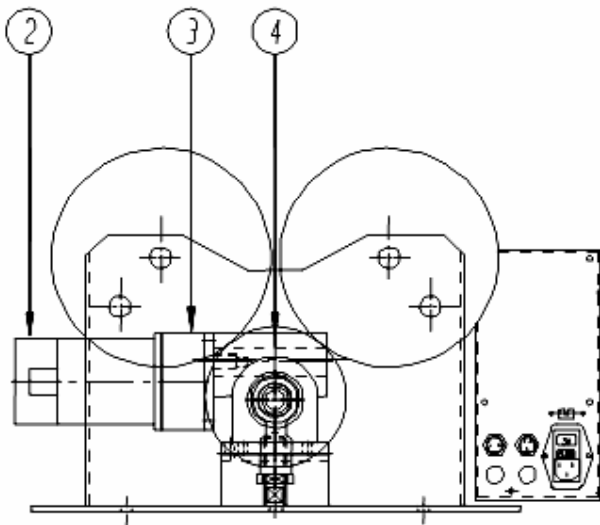
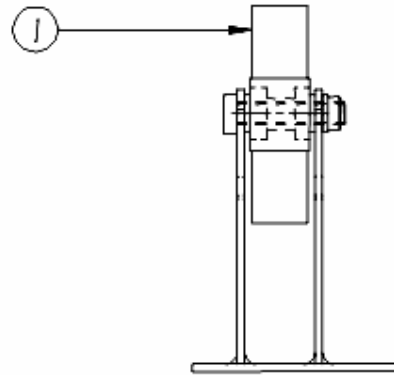
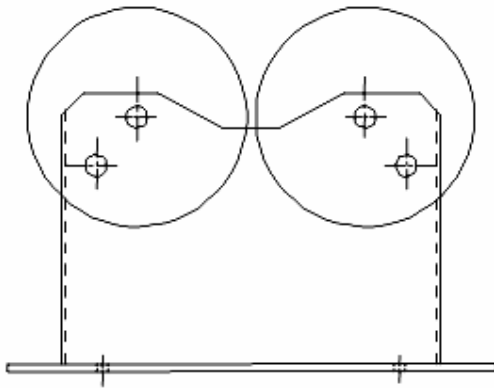
4.1 PARTS LIST - MAIN FRAME

Fig No.	Part No.	Description	Q'ty.	Remark
1	5041-1030000-10	Roll unit (PU wheel + bearing)	4	
	5041-1030100-10	PU wheel	4	
	0301-0403	Deep-groove ball Bearing	8	
2	0361-0011	DC Motor, 24V 65W	1	
3	0351-0301	Gear reducer 1/15	1	
4	0352-0401	Worm gear reducer 1/30	1	
5	5041-1020000-10	Main drive wheel	1	
6	0311-2001	Joint bearing	1	

*Recommended spare parts

**Options

4.1 PARTS LIST - MAIN FRAME



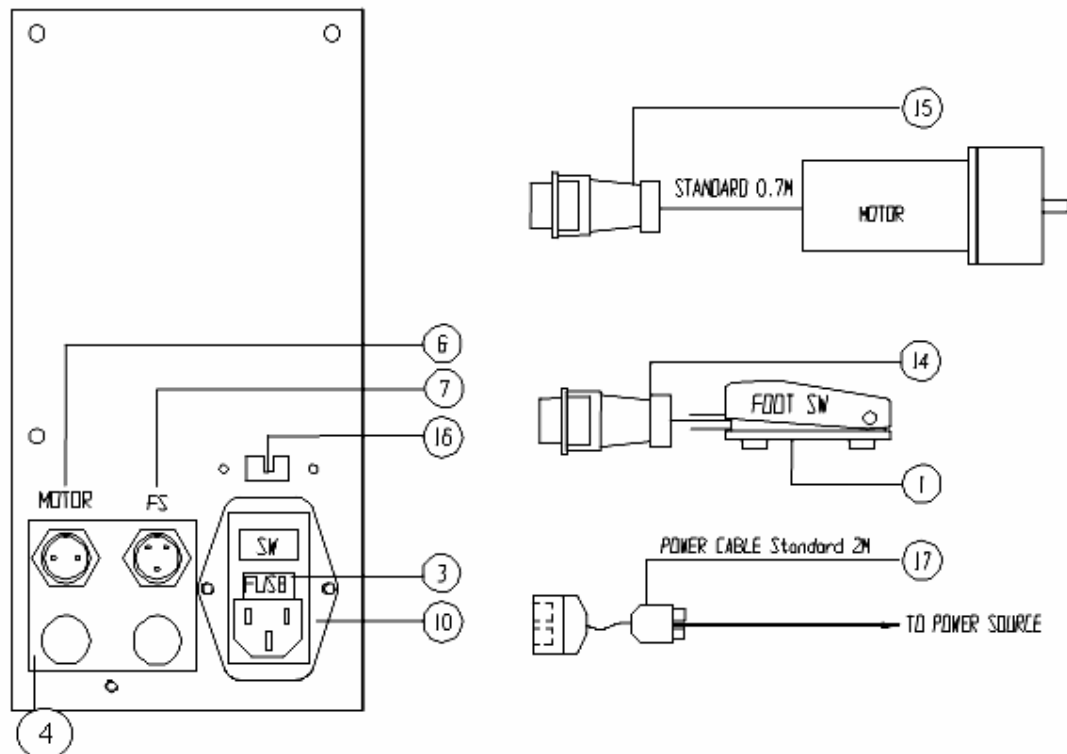
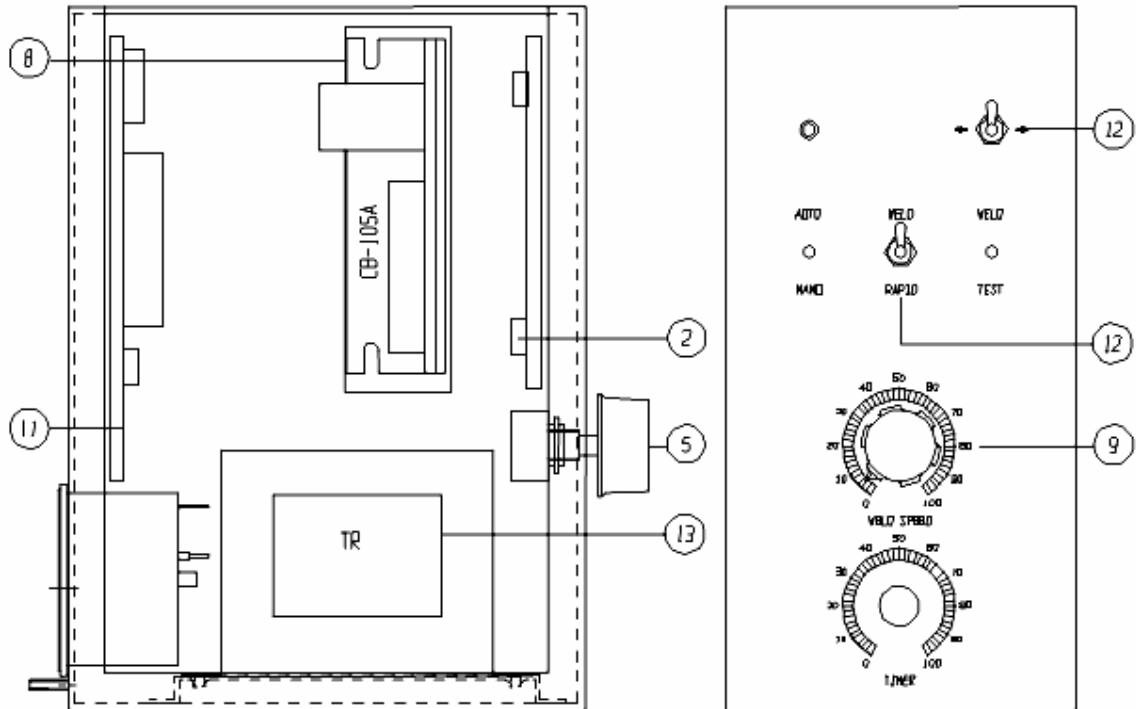
4.2 PARTS LIST - CONTROL BOX

Fig No.	Part No.	Description	Q'ty.	Remark
1	3242-0001	Foot switch	1	Foot switch
	3452-3001	Cable 0.75/2c*3M	1	
2	6620-6220	Front panel board	1	Front panel board
3	* 3226-2001	Fuse 1A 20mm	2	Fuse
4	6620-6311	I/O board	1	I/O board
5	3216-0003	Knob (Blue)	1	KNOB
6	3124-2003	Connector	1	J1
7	3124-2004	Connector	1	J2
8	6651-0001	Motor speed control	1	Motor control
9	3747-1001	Potentiometer	1	VR1
10	3331-2001	Power entry module	1	SW1
11	6620-6120	Relay board	1	Relay board
12	3213-1003	Toggle switch	2	S4, S5
13	3311-0023	Transformer	1	TR
14	3123-2004	Connector	1	FS connector
15	3123-2003	Connector	1	Motor connector
16	3217-2001	Voltage switch	1	SW2
17	3445-0001	Power cable	1 set	Power cable

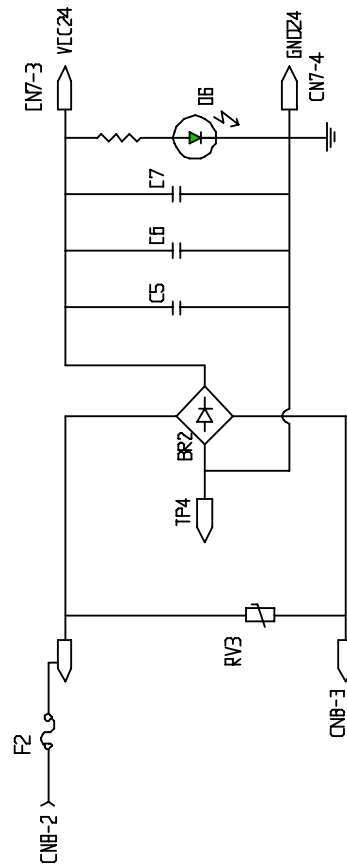
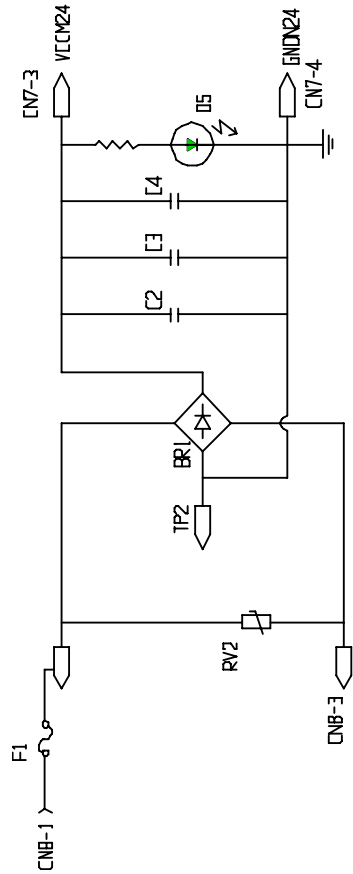
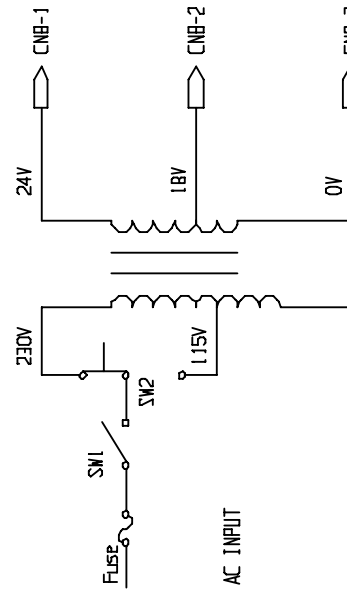
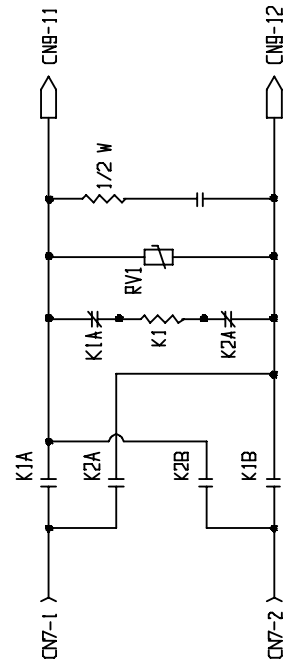
*Recommended spare parts

**Options

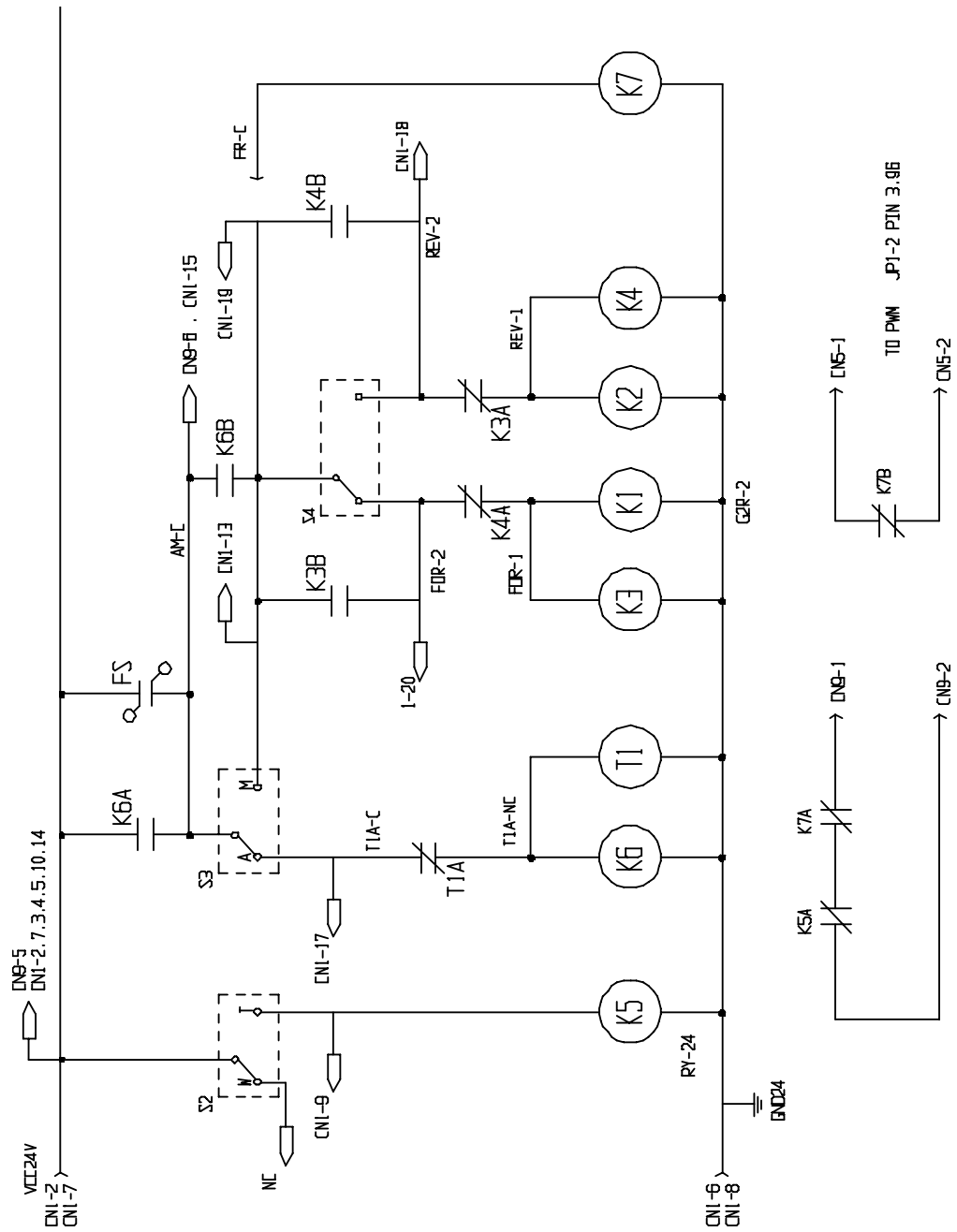
4.2 PARTS LIST - CONTROL BOX



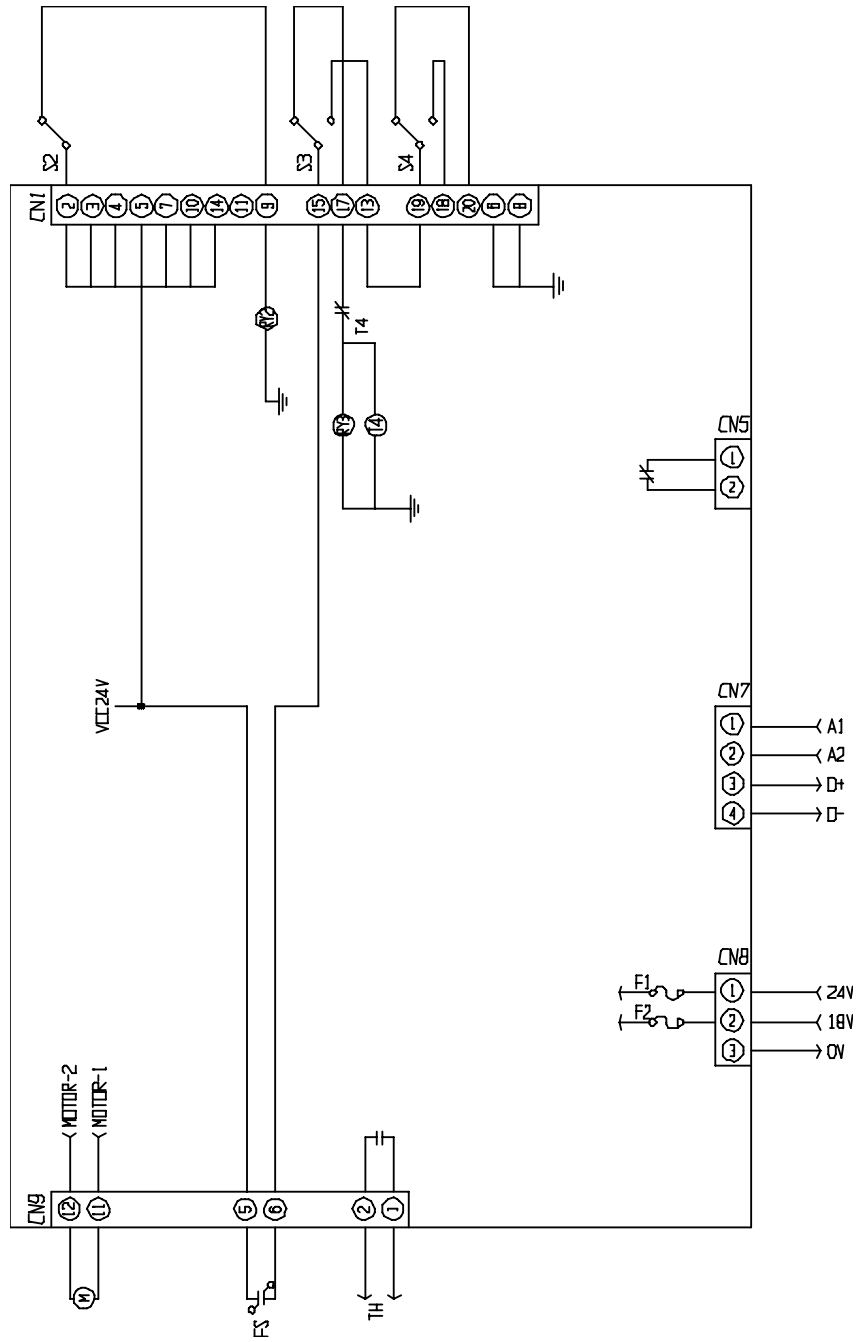
5.1 MAIN CONTROL CIRCUIT DIAGRAM



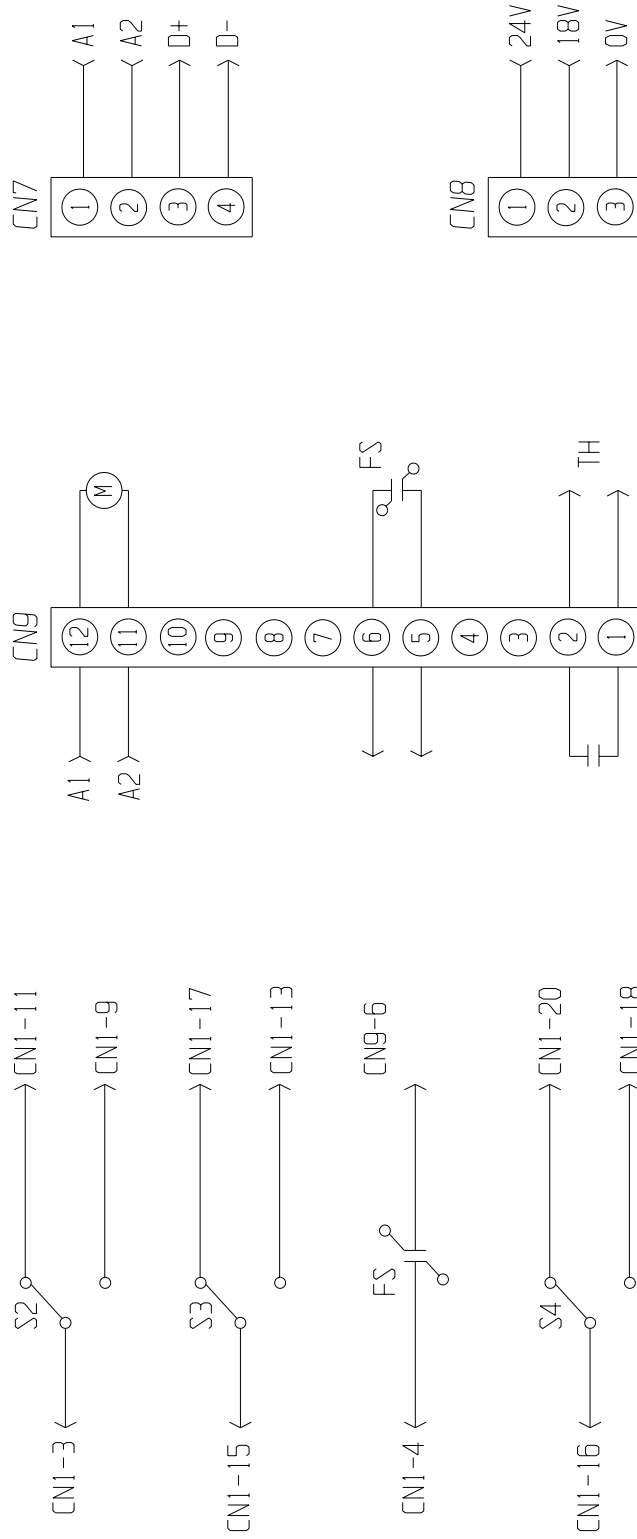
5.2 RELAY BOARD – CIRCUIT DIAGRAM



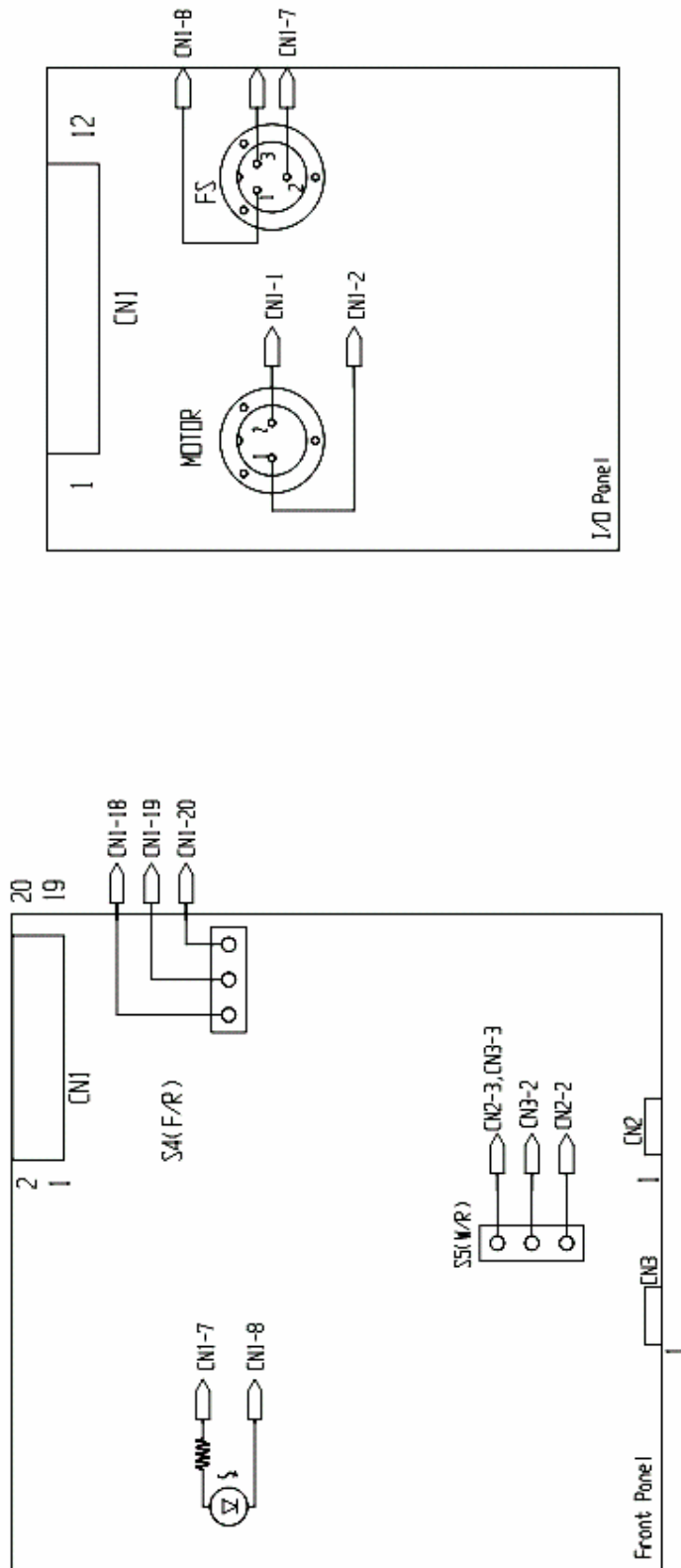
5.2 RELAY BOARD – CIRCUIT DIAGRAM



5.2 RELAY BOARD – CIRCUIT DIAGRAM



5.3 I/O INTERFACE



VCC24: CNI-3, 4, 5, 10, 14
 GND24: CNI-6, 8

