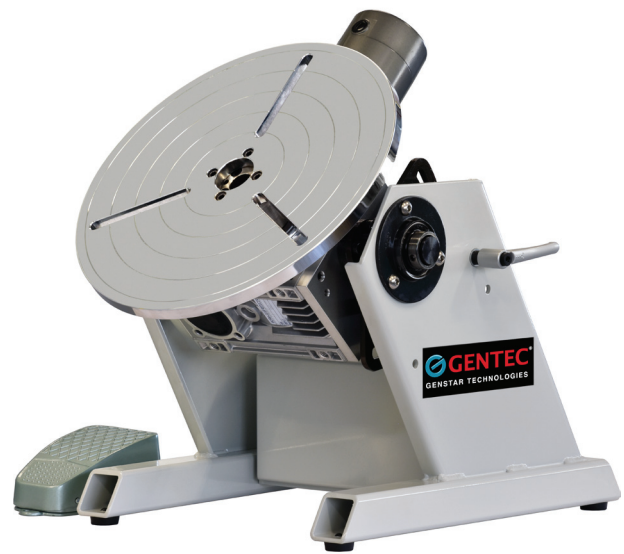


Gentec's welding positioners allow users to quickly and easily position a workpiece in many different positions. The quality and construction of Gentec positioners provide safe, long-life operation with easy access for positioner maintenance.

**GPD-11B****GPA-221A**

Features

- High quality worm gear reducers for smooth operation and minimal backlash
- Capacities range from 220 lbs to 44,000 lbs 360° degree rotation
- 135° degree tilts on all models
- Maintenance free grounding system
- High frequency protected
- Standard forward/reverse rotation and variable speed control
- Machined "T" slots table with center through hole

Optional accessories

- 3-Jaw chucks
- Variable speed foot control



GPD-442A



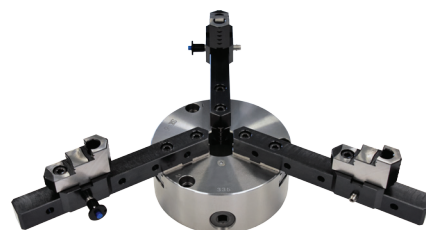
GBX-D

Digital controller with reference function for 220 lb, 440 lb positioner



GC-01

3-Jaw gripper
OD 0.15-5.9 inches



GGC-03L

3-Jaw gripper
OD 0.15-19 inches

Specifications

| Model | unit | GPA-221A (0.3-4 RPM) GPA-221D (1-16 RPM) (Analog Display) | GPA-441A (0.3-4 RPM) GPA-441D (1-16 RPM) (Analog Display) | GPD-222A (0.3-4 RPM) GPD-222D (1-16 RPM) (Digital Display) | GPD-442A (0.3-4 RPM) GPD-442D (1-16 RPM) (Digital Display) | GPD-11B | GPD-22 | GPD-44 | GPD-66 | GPD-11K | |
|-------------------------|------|---|---|--|--|---------|------------------------------|---------------------------|----------|----------|--|
| Power input | - | AC 100~240V, 50/60Hz, 1 Phase | | | | | AC220V 50/60Hz 1 Phase | AC 220V, 50/60Hz, 3 Phase | | | |
| Overall length (A) | in | 18 | 18 | 18 | 18 | 30 | 43 | 54 | 60 | 70 | |
| Overall width (B) | in | 12 | 12 | 12 | 12 | 25 | 36 | 47 | 52 | 58 | |
| Overall height (C) | in | 14 | 14 | 14 | 14 | 24 | 32 | 41 | 45 | 50 | |
| Center to floor (D) | in | 10 | 10 | 10 | 10 | 22 | 28 | 36 | 40 | 44 | |
| Capacity | lbs | 220/132 | 440/286 | 220/132 | 440/286 | 1,100 | 2,200 | 4,400 | 6,600 | 11,000 | |
| Rated center of gravity | in | | | | | 3.93 | 11 | 11 | 11 | 11 | |
| Rated eccentricity | in | A: 180 D: 45 | | A: 180 D: 45 | | 3.93 | 7.87 | 11 | 7.87 | 7.87 | |
| Table dimension (E) | in | 12 | 12 | 12 | 12 | 18 | 24 | 32 | 40 | 48 | |
| Table slot bolt size | | M10 | M10 | M10 | M10 | M12 | M12 | M16 | M20 | M24 | |
| Tilt range | deg | 0~120 | 0~120 | 0~120 | 0~120 | 0~135 | 0~135 | 0~135 | 0~135 | 0~135 | |
| Rotation speed | rpm | A: 0.3~4 D: 1~16 | | A: 0.3~4 D: 1~16 | | 0.12~2 | 0.05~1 | 0.05~0.8 | 0.05~0.8 | 0.04~0.8 | |
| Welding timer | sec | 0~60 | 0~60 | 0~60 | 0~60 | 0~60 | - | - | - | - | |
| Earthing | amp | 200 | 200 | 200 | 200 | 400 | 400 | 800 | 800 | 800 | |
| Weight | lbs | 84 | 93 | 84 | 93 | 298 | 772 | 1,654 | 3,968 | 6,172 | |

Dimensions
